

DATA  
SHEET

# Payment Fraud Intelligence Module

Proactively identify and mitigate risks from payment fraud

## Challenge

Fraudsters use a number of devious methods to skim payment cards online or in-store, and then post the stolen cards for sale on underground forums and dark web card shops. This has created a multi-billion dollar industry impacting merchants, cardholders, and financial institutions. Detecting fraud after illicit transactions have already taken place is too late, as banks and merchants will have suffered financial and reputational losses.

## Solution

Take preemptive action to identify and eliminate compromised payment cards before they're used with Recorded Future Payment Fraud Intelligence. Leveraging real-time intelligence, financial institutions can develop and implement effective mitigation strategies to counter the effect of payment compromises and subsequent fraud attacks. Shifting to a proactive approach to mitigating fraud can save hundreds, thousands, and millions of dollars in chargebacks and fraud investigations, while simultaneously increasing brand reputation and hurting the reputation of the criminals responsible for selling your card data.

## Features

**Monitor Card Portfolio Exposure in Real Time:** Real-time collection of partial data elements from cards posted on dark web shops allows for automated identification of at-risk accounts. Leverage real-time intelligence to take preemptive action and prevent fraud before it occurs, even if a compromised card has already been sold.

**Diagnose Compromised Common Points of Purchase (CPPs):** Malicious actors often release compromised cards from a breached merchant in small batches to both mask their activity and not flood the market. Leverage stolen card details to identify compromised common points of purchase (CPPs) before unauthorized transactions occur. Additionally, the Magecart Overwatch solution monitors and scans hundreds of thousands of e-commerce sites to find infections and pinpoint the full exposure window even before compromised card data is offered up for sale.

## BENEFITS

- Identify up to 90% of compromised card assets within hours of a breach (well in advance of CAMS alerts)
- Pinpoint compromised common points of purchase (CPPs)
- Enrich FICO Falcon and other fraud management systems
- Enhance risk-exposure models and lower fraud potential
- Improve average fraud rate metrics across you entire card portfolio

**Diagnose Compromised Common Points of Purchase (CPPs):** Malicious actors often release compromised cards from a breached merchant in small batches to both mask their activity and not flood the market. Leverage stolen card details to identify compromised common points of purchase (CPPs) before unauthorized transactions occur. Additionally, the Magecart Overwatch solution monitors and scans hundreds of thousands of e-commerce sites to find infections and pinpoint the full exposure window even before compromised card data is offered up for sale.

**Track Card Checker Services as a Last Line of Defense:** Identify when fraudsters use card checker services to determine if the cards are valid prior to attempting to monetize them. By adding known checker merchants to a risk model, financial institutions can monitor their portfolio and receive a final warning signal to raise the risk score of cards that are conducting low-dollar transactions or authorizing with known checker merchants.

**Protect Your Portfolio:** Receive notifications about sudden supply increases of compromised payments cards, with precise geographical attribution and the exact number of exposed accounts.

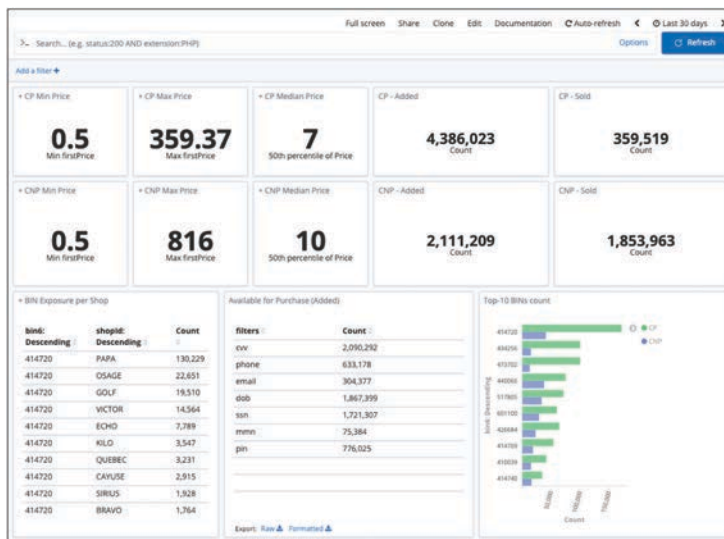
**Compare Your Success:** Evaluate your fraud prevention efforts with higher accuracy by comparing current and historical statistical data with your most significant peers in the space. Fraudsters are looking for easy targets, banks can make themselves a hard target by leveraging Recorded Future's Payment Fraud Intelligence to preemptively block fraudulent charges and lower the value of stolen cards for sale.

## Results\*

**Identify up to 75% of Compromised Cards Before Fraud Occurs:** Recorded Future's Payment Fraud Intelligence Module proactively identifies critical information posted for sale on the dark web, enabling banks to match the records within their portfolio to pinpoint a single compromised account or a small set of compromised accounts.

**Improve ROI by over 3,000%:** With Payment Fraud Intelligence from Recorded Future financial institutions can go on the offensive to protect their portfolio and clients from fraudulent charges. Access stolen card information for sale on the dark web, preemptively scan merchants for live infections, leverage card checker services as a last line of defense, and more to mitigate the financial and reputational risks of payment card fraud.

\*Results taken from client engagements where the Card Fraud Intelligence Module was leveraged to reduce payment card fraud



Recorded Future's Payment Fraud Intelligence Module provides detailed information on cards stolen from Card-Present transactions and Card-Not-Present transactions to help financial institutions stop fraud before it happens.

## ABOUT RECORDED FUTURE

Recorded Future is the world's largest intelligence company. The Recorded Future Intelligence Platform provides the most complete coverage across adversaries, infrastructure, and targets. By combining persistent and pervasive automated data collection and analytics with human analysis, Recorded Future provides real-time visibility into the vast digital landscape and empowers clients to take proactive action to disrupt adversaries and keep their people, systems, and infrastructure safe. Headquartered in Boston with offices and employees around the world, Recorded Future works with more than 1,300 businesses and government organizations across 60 countries. Learn more at [recordedfuture.com](https://recordedfuture.com).



[www.recordedfuture.com](https://www.recordedfuture.com)



@RecordedFuture