

Solving today's identity challenges with an identity fabric

Building a product-agnostic identity fabric
to take the complexity out of identity



Highlights

Eliminate identity silos
with IBM Security
Verify Directory

Seamlessly integrate
all applications
with IBM Security
Application Gateway

Gain real-time risk-based
authentication with IBM
Security Verify Trust

Facilitate seamless
integration across
identity silos with
low/no-code orchestration

As cloud migration and digital transformation have continued to accelerate, organizations are left with many new identity challenges that they aren't prepared to deal with. The proliferation of diverse cloud environments, each with its own identity solutions, coupled with the complexities of legacy systems that lack security capabilities, has resulted in a lack of a holistic view, fragmented identity silos, an inconsistent user experience and security controls across modern and legacy systems with a lack of real-time visibility into user behaviors across the identity landscape. IBM Security® Verify provides the foundational building blocks enabling clients to build an identity fabric to solve the identity challenges created by cloud migration and digital transformation. The identity fabric can consist of IBM solutions or built with your existing third-party tools. IBM helps eliminate identity silos, improves user experience across all apps by extending modern authentication mechanisms to legacy apps with no-code changes, enables a consistent user experience across all applications and improves security posture with real-time behavioral and biometric risk-based authentication.

IBM Security Verify is dedicated to simplifying identity across your hybrid environment, by helping you build an identity fabric. IBM Security Verify can supplement your existing identity tools and solutions and help integrate them, creating an entire integrated solution for your customer identity and access management (CIAM) or employee modernization efforts.



Eliminate identity silos with IBM Security Verify Directory

A standalone solution anchored in flexibility, efficiency and scalability. This isn't merely a directory server; it represents a fresh perspective on envisioning and managing identities. Regardless of the enterprise's size, the IBM Verify Directory can integrate seamlessly into the environment, facilitating smooth and secure access control. If identities are the new perimeter in hybrid cloud environments, then it is imperative that organizations have a single authoritative view of any given identity across the landscape. The IBM Verify Directory consolidates the directory and delivers that single source of truth, management and enforcement to unlock more intelligence, insightful use cases, threat detection and a successful identity fabric solution. Additionally, IBM Verify Directory capabilities help reduce cost and improve compliance by decreasing shadow IT and consolidating the multiple directories that you have to manage.

Seamlessly integrate all applications with IBM Security Application Gateway

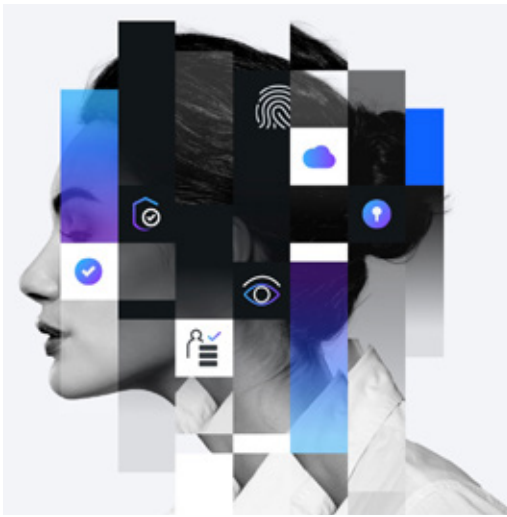
As organizations modernize identity and access management (IAM) solutions, legacy applications are often abandoned due to lacking funding, time or the ability to modify existing application authentication flows. Recognizing the challenges of transitioning legacy applications to modern Identity Provider (IDP) stacks, the IBM Application Gateway is designed to facilitate a smoother digital transformation journey with little effort or investment. Integrating legacy systems with modern IAM solutions, IBM removes integration complications while ensuring applications remain secure and accessible. The Verify Gateway provides no-code integrations that allow legacy applications to take advantage of modern and advanced authentication capabilities like passkeys and provides an integrated view of user flows across all applications, helping to reduce risk and improve regulatory compliance.

Gain real-time risk-based authentication with IBM Security Verify Trust

This solution offers a dynamic, adaptive security layer to any existing IAM solution, enabling continuous, real-time assessment of identity risk levels for authentication and other key user lifecycle milestones. This helps ensure enhanced security without necessitating an overhaul of existing systems. Verify Trust offers a multilayered digital user risk assessment that helps organizations transparently authenticate users and build trust for a seamless digital experience. Powered by AI, Verify Trust delivers accurate protection against the latest account takeover techniques by combining global intelligence, user behavioral biometrics, authentication results, network data, account history and a wide range of device risk detection capabilities. It provides a highly accurate—low false-positive—risk assessments, ultimately improving the user experience while enhancing security. Verify Trust enables continuous access by instrumenting user workflows outside of just authentication, including transaction monitoring. Leveraging IBM Security Application Gateway, IBM Security Verify Trust can easily be inserted into existing application authentication flows.

IBM Security Verify

IBM Security Verify is dedicated to simplifying identity across your hybrid environment by helping you build an identity fabric utilizing and identity orchestration engine that allows clients to build this fabric with no-code/low-code drag and drop simplicity. IBM Verify can supplement your existing identity tools and solutions and help integrate them, creating or providing an integrated solution for your CIAM or employee modernization efforts.



Conclusion

IBM Security Verify provides the foundational building-blocks of an identity fabric to solve today's biggest identity challenges. IBM helps eliminate identity silos with a single, authoritative directory, extends modern authentication mechanisms to legacy applications with no-code changes, and helps improve your security posture with an advanced authentication solution that combines global intelligence, user behavioral biometrics, authentication results, network data, account history and a wide range of device risk detection capabilities to provide real-time risk-based authentication.

Whether you are an organization looking for workforce access, customer IAM, privileged access or governance identity solutions, or one looking to build an identity fabric with your existing identity solutions, IBM Verify takes the complexity out of identity solutions for hybrid environments. We invite all stakeholders to join us on this transformative journey as we shape the future of identity and access management. Together, we will simplify identity solutions for the ever-evolving world of hybrid environments.

Why IBM?

IBM Security Verify is a portfolio that includes identity access management and governance solutions and products solving today's identity challenges created by cloud migration and digital transformation. IBM Verify includes product-agnostic tools that enable the identity fabric by eliminating identity silos with a single, authoritative directory, extending modern authentication mechanisms to legacy applications with no heavy lifting and reducing identity threats with real-time behavioral and biometric risk assessment.

For more information

To learn more about IBM Security Verify, please contact your IBM representative or IBM Business Partner, or visit ibm.com/products/verify-identity.

Complexity is the enemy of securing identity,
Strata Identity Orchestration, 2023.

© Copyright IBM Corporation 2023

IBM Corporation
New Orchard Road
Armonk, NY 10504

Produced in the
United States of America
November 2023

IBM, IBM logo, and Security are trademarks or registered trademarks of International Business Machines Corporation, in the United States and/or other countries. Other product and service names might be trademarks of IBM or other companies. A current list of IBM trademarks is available on ibm.com/trademark.

This document is current as of the initial date of publication and may be changed by IBM at any time. Not all offerings are available in every country in which IBM operates.

THE INFORMATION IN THIS DOCUMENT IS PROVIDED "AS IS" WITHOUT ANY WARRANTY, EXPRESS OR IMPLIED, INCLUDING WITHOUT ANY WARRANTIES OF MERCHANTABILITY, FITNESS FOR A PARTICULAR PURPOSE AND ANY WARRANTY OR CONDITION OF NON-INFRINGEMENT.

IBM products are warranted according to the terms and conditions of the agreements under which they are provided.

