



Discover, classify, and
investigate access to
your organisation's
unstructured data.

www.getvisibility.com



Getvisibility
Focus

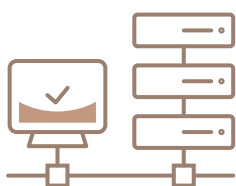
The Getvisibility Focus Solution

Organisations have enormous quantities of data scattered across file servers, cloud infrastructure and mobile devices. Almost every organisation will have files on their network that contain sensitive, personal or regulated content. Unfortunately, most organisations have no idea what their unstructured data footprint looks like and they're creating significantly more data on a daily basis.

If we couple this with a sharp rise in cybersecurity breaches and strict new regulations you have a very challenging environment that's putting severe pressure on organisations. Getvisibility's approach is to help companies understand and control their data footprint with the highest accuracy possible. Without this, unstructured data security simply cannot work.

Many current solutions tend to be inaccurate, expensive, resource intensive, and have relatively low success levels. Getvisibility has created a solution using the latest in artificial intelligence to help companies to protect and govern their data, quickly and cost effectively like never before, in a quick and cost effective manner. Using state-of-the-art machine learning algorithms, we combine natural language processing with neural networks and optical character recognition. This allows us to discover and classify unstructured data across organisations' infrastructures with unparalleled accuracy and speed without affecting file server performance.

The Getvisibility reporting suite enables data remediation through tactical reporting on issues such as:



Discover

Automated unstructured data discovery across the organisations estate, including a full data inventory and access permissions.



Classify

Customised categories, subcategories and classification levels in line with company policies and taxonomy.



Protect

Accurate classification and detailed reports allow for precise and effective data protection and allow security solutions such as data loss prevention to yield superior results.

Getvisibility Focus discovers data scattered across file servers and cloud infrastructures. New connections can be configured seamlessly through the Getvisibility's multiple connection wizards available on the Focus dashboard. Once a connection is established and access permissions are granted, scans can be either manually triggered or kicked off automatically.

Examples of Getvisibility discovery capabilities include but are not limited to:

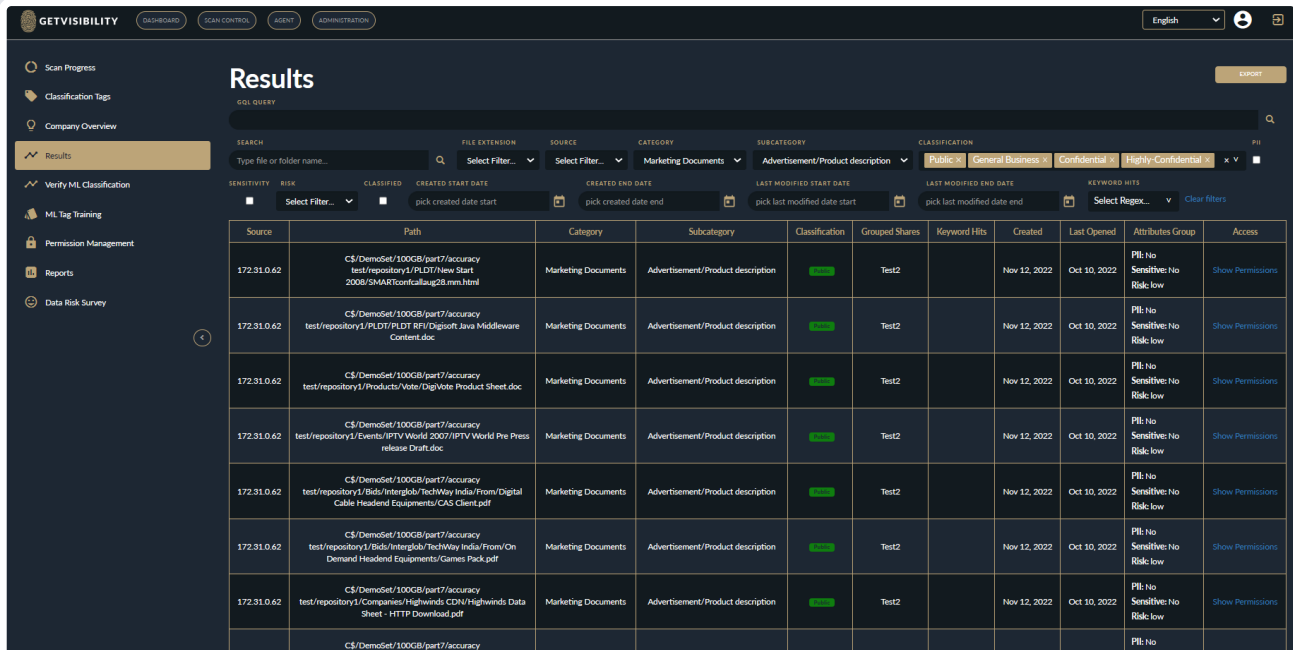
- File servers
- OneDrive
- Sharepoint Online and Sharepoint On-premise
- Google Drive
- Box

Data classification is the process of analysing structured or unstructured data, and organising it into categories based on its contents and metadata using a range of methodologies. Data classification helps organisations answer important questions about their data that inform how they mitigate risk and manage data governance policies.

Getvisibility uses advanced machine learning models to classify data with unparalleled accuracy, in line with organisations taxonomy and data governance policies.

Classification results are represented in a user friendly dashboard which can be searched, filtered, and sorted according to the administrator's needs. These results can also be exported in an actionable format for remediation or other tasks.

Focus Dashboard



Results

SQL QUERY

SEARCH: Type file or folder name... Select Filter... FILE EXTENSION: Select Filter... SOURCE: Select Filter... CATEGORY: Marketing Documents SUBCATEGORY: Advertisement/Product description CLASSIFICATION: PUBLIC, General Business, Confidential, Highly Confidential

SENSITIVITY: Select Filter... RISK: Select Filter... CREATED START DATE: pick created date start CREATED END DATE: pick created date end LAST MODIFIED START DATE: pick last modified date start LAST MODIFIED END DATE: pick last modified date end KEYWORD HITS: Select Regex... Clear filters

Source	Path	Category	Subcategory	Classification	Grouped Shares	Keyword Hits	Created	Last Opened	Attributes Group	Access
172.31.0.62	C:\DemoSet\100GB\part7\accuracy\test\repository1\PLDT\New Start 2008\SMARTconfcallaug28.mn.html	Marketing Documents	Advertisement/Product description	CONFIDENTIAL	Test2		Nov 12, 2022	Oct 10, 2022	PII: No Sensitive: No Risk: low	Show Permissions
172.31.0.62	C:\DemoSet\100GB\part7\accuracy\test\repository1\PLDT\PLDT RFI\Digisoft Java Middleware Content.doc	Marketing Documents	Advertisement/Product description	CONFIDENTIAL	Test2		Nov 12, 2022	Oct 10, 2022	PII: No Sensitive: No Risk: low	Show Permissions
172.31.0.62	C:\DemoSet\100GB\part7\accuracy\test\repository1\Products\Vote Dig\Vote Product Sheet.doc	Marketing Documents	Advertisement/Product description	CONFIDENTIAL	Test2		Nov 12, 2022	Oct 10, 2022	PII: No Sensitive: No Risk: low	Show Permissions
172.31.0.62	C:\DemoSet\100GB\part7\accuracy\test\repository1\Events\IPTV World 2007\IPTV World Pre Press release Draft.doc	Marketing Documents	Advertisement/Product description	CONFIDENTIAL	Test2		Nov 12, 2022	Oct 10, 2022	PII: No Sensitive: No Risk: low	Show Permissions
172.31.0.62	C:\DemoSet\100GB\part7\accuracy\test\repository1\Bids\Interglob\TechWay India\From/Digital Cable Headend Equipments\CAS Client.pdf	Marketing Documents	Advertisement/Product description	CONFIDENTIAL	Test2		Nov 12, 2022	Oct 10, 2022	PII: No Sensitive: No Risk: low	Show Permissions
172.31.0.62	C:\DemoSet\100GB\part7\accuracy\test\repository1\Bids\Interglob\TechWay India\From/On Demand Headend Equipments\Games Pack.pdf	Marketing Documents	Advertisement/Product description	CONFIDENTIAL	Test2		Nov 12, 2022	Oct 10, 2022	PII: No Sensitive: No Risk: low	Show Permissions
172.31.0.62	C:\DemoSet\100GB\part7\accuracy\test\repository1\Companies\Highwinds\CDN\Highwinds Data Sheet - HTTP Download.pdf	Marketing Documents	Advertisement/Product description	CONFIDENTIAL	Test2		Nov 12, 2022	Oct 10, 2022	PII: No Sensitive: No Risk: low	Show Permissions
172.31.0.62	C:\DemoSet\100GB\part7\accuracy\test\repository1\Research\JAVA\Java 1.1\Java1...	Marketing Documents	Advertisement/Product description	CONFIDENTIAL	Test2		Nov 12, 2022	Oct 10, 2022	PII: No Sensitive: No Risk: low	Show Permissions

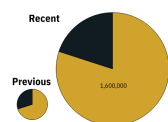
The Getvisibility reporting suite sits within the administrator dashboard and allows for one- click, use case specific report generation. The Getvisibility reporting suite provides information on key areas of risk regarding: users, groups, passwords, and access permissions

Available reports include but are not limited to:

- Sensitive Files
- Access Permissions
- Duplicate Files
- Redundant Obsolete or Trivial (ROT)
- Data Risk Assessments

Sample Reports

Classified Files

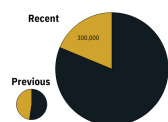


Recent: 2,000,000 Files
Previous: 1,500,000 Files
Percentage: 80%
Change since last scan: 33%

This is the number of files that were scanned and the subsequent number of files that were classified.

Recommendations

File Accessible By Everyone

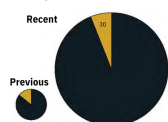


Recent: 1,000,000 Files
Previous: 1,000,000 Files
Percentage: 10%
Change since last scan: 25%

This is the number of classified files that are accessible to everyone in Active Directory. These files can be seen by everyone.

Recommendations

Users With Passwords >90 days

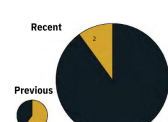


Recent: 500 Users
Previous: 700 Users
Percentage: 6%
Change since last scan: 8%

This is the number of accounts from the passwords are over 90 days old. This is a risk and passwords need to be changed before 90 days. Please refer to the detailed remediation report for a list of these accounts and files.

Recommendations

Groups Inactive In 6 Months

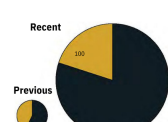


Recent: 20 Groups
Previous: 40 Groups
Percentage: 10%
Change since last scan: 50%

This is the number of groups that have not been active in 6 months, or will have access to files. Any such groups should be assessed and removed where applicable. Please refer to the detailed remediation report for a list of these accounts and files.

Recommendations

Users Inactive In 30 Days

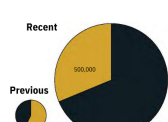


Recent: 500 Users
Previous: 700 Users
Percentage: 20%
Change since last scan: 22%

This is the number of users who have not been active for 30 days. This number should be as small as possible. Please refer to the detailed remediation report for a list of these accounts and files.

Recommendations

Files Accessible By >100 Users

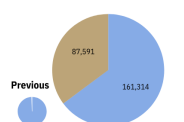


Recent: 1,000,000 Files
Previous: 1,000,000 Files
Percentage: 31%
Change since last scan: 26%

This is the number of files where more than 100 accounts have access to that file. Please refer to the detailed remediation report for a list of these accounts.

Recommendations

Duplicate Files - Total Scanned: 248,905

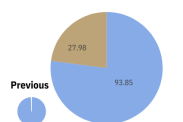


Recent: 161,314 Files
Previous: 87,591 Files
Percentage duplicates: 35.5%
Change since last scan: 0%

A duplicate file is defined as an exact copy of another file. Getvisibility counts all instances of these duplicates, and sums up the total size together to calculate the total wasted space.

Recommendations unavailable. No previous scan.

Duplicate Space On Disk - Directory Files: 121.83 GB

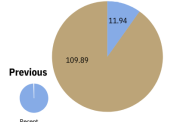


Recent: 27.98 GB
Previous: 93.85 GB
Percentage duplicate space: 23%
Change since last scan: 0%

By deleting all duplicates except the master copy, the above amount of disk space can be freed.

Recommendations unavailable. No previous scan.

Largest Files - Top 10 Files In The Directory

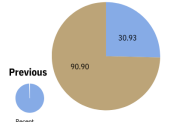


Recent: 11.94 GB
Previous: 109.89 GB
Percentage largest top 10 files: 10%
Change since last scan: 0%

This graph represents the top 10 largest files discovered.

Recommendations unavailable. No previous scan.

Largest Files - Top 100 Files In The Directory

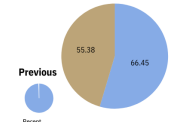


Recent: 30.93 GB
Previous: 90.90 GB
Percentage largest top 100 files: 25%
Change since last scan: 0%

This graph represents the top 100 largest files discovered.

Recommendations unavailable. No previous scan.

Largest Files - Top 1000 Files In The Directory



Recent: 66.45 GB
Previous: 55.38 GB
Percentage largest top 1000 files: 45%
Change since last scan: 0%

This graph represents the top 1000 largest files discovered.

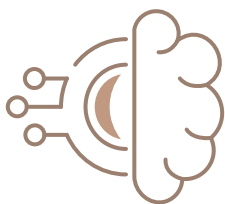
Recommendations unavailable. No previous scan.

Access and Permissions

Access and permissions determine what users, accounts and groups can view, alter or remove digital information across an organisation. This is usually enforced through Seclore or Sealpath software. As with many data protection strategies, these platforms can provide limited defence without being informed by accurate unstructured data discovery and classification.

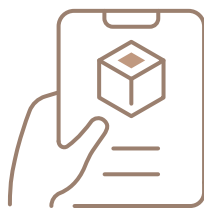
Correct access and permissions is vital for organisations from a commercial and regulatory perspective, in ensuring that sensitive information is only accessible to those with a legitimate reason and security level.

Getvisibility integrates with Active Directory and other IRM solutions to enhance access security within organisations. The Getvisibility reporting suite provides information on key areas of risk regarding users, groups, passwords and access permissions. Integration with IRM solutions also allow for effective remediation on these areas of risk.



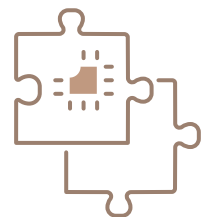
Integration

Getvisibility integrates with a number of IRM platforms, which can be easily configured through the Getvisibility configuration wizard. As Getvisibility writes tags to document's metadata, it is easily and effectively read by a multitude of information rights management solutions.



Reporting

The Getvisibility reporting suite provides multi-layered reports for stakeholders at varying levels within an organisation. Appropriate users can generate information based on a number of key user and permission issued such as stale accounts, highly visible sensitive information, password changes and much more.



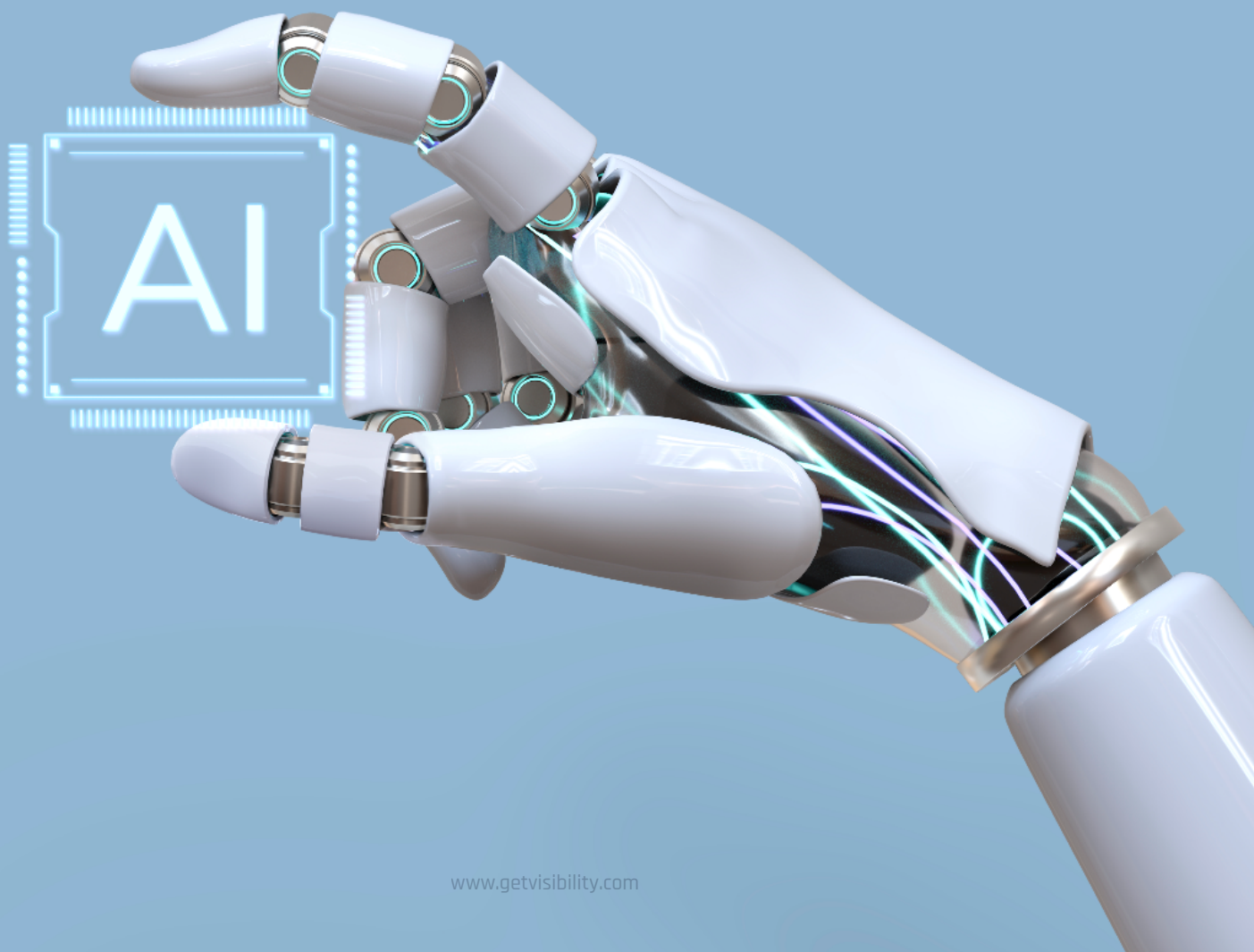
Remediation

With comprehensive and accurate information provided by the Getvisibility reporting suite, as well as precise document classification, organisations are enabled to apply effective remediation to the access management in a timely and resource light manner.

Using Machine Learning

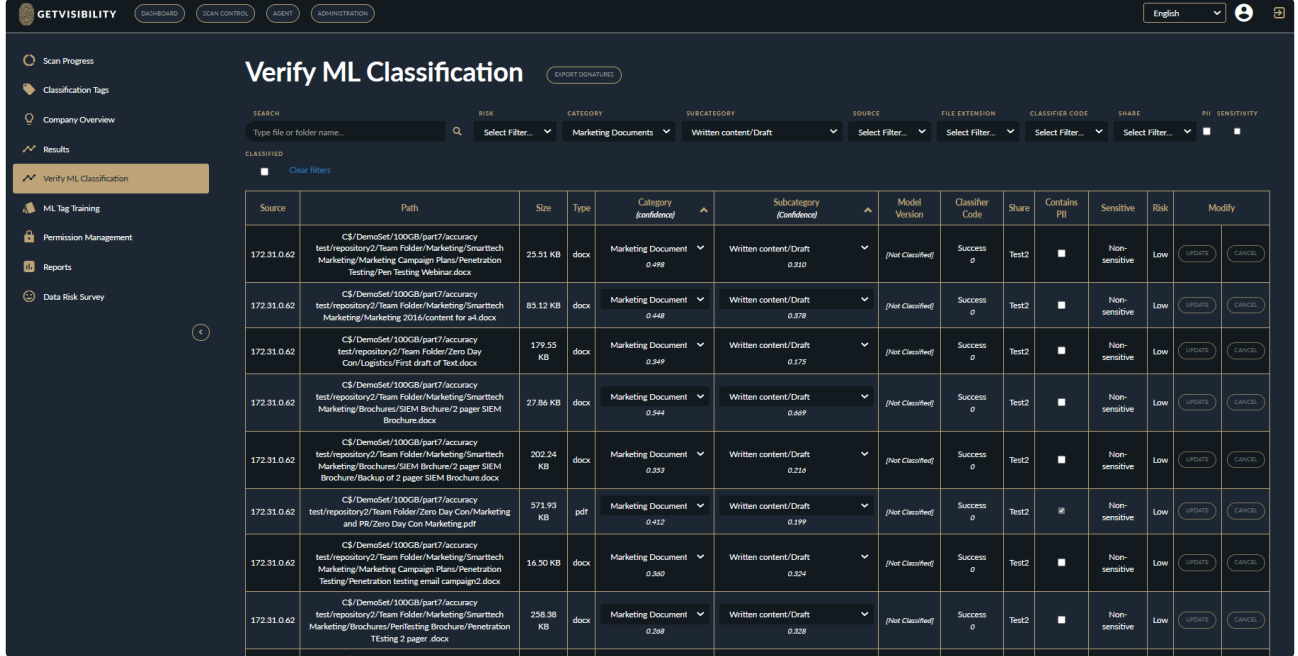
Getvisibility has trained machine learning models to handle documents and find sensitive information. Machine learning plays a vital role in Getvisibility's solution, as it allows the platform to run quickly, efficiently and accurately without a large drain on resources. With organisations that are storing data in multiple cloud environments, including on-prem, relying on a cloud provider that can only provide visibility into data within its own cloud service severely limits data security efficacy. Typical discovery and classification tools require manual admin intervention to deliver results even those that make limited use of machine learning need someone to step in to make training decisions.

Getvisibility's ML models are trained on real data, from real organizations across a broad range of verticals. This ensures our models' ongoing accuracy and performance, and assures our customers that the ML classifications they discover are meaningful and actionable.



Machine Learning - Model Training

ML Classification



Source	Path	Size	Type	Category (confidence)	Subcategory (confidence)	Model Version	Classifier Code	Share	Contains PII	Sensitive	Risk	Modify
172.31.0.62	C:\DemoSet\100GB\part7\accuracy test\repository2\Team Folder\Marketing\Smarttech Marketing\Marketing Campaign Plans\Penetration Testing\Pen Testing Webinar.docx	23.51 KB	docx	Marketing Document 0.498	Written content/Draft 0.210	[Not Classified]	Success 0	Test2	■	Non-sensitive	Low	<button>UPDATE</button> <button>CANCEL</button>
172.31.0.62	C:\DemoSet\100GB\part7\accuracy test\repository2\Team Folder\Marketing\Smarttech Marketing\Marketing 2016\content for a4.docx	83.12 KB	docx	Marketing Document 0.448	Written content/Draft 0.378	[Not Classified]	Success 0	Test2	■	Non-sensitive	Low	<button>UPDATE</button> <button>CANCEL</button>
172.31.0.62	C:\DemoSet\100GB\part7\accuracy test\repository2\Team Folder\Zero Day Con\Logistics\First draft of Text.docx	179.55 KB	docx	Marketing Document 0.549	Written content/Draft 0.175	[Not Classified]	Success 0	Test2	■	Non-sensitive	Low	<button>UPDATE</button> <button>CANCEL</button>
172.31.0.62	C:\DemoSet\100GB\part7\accuracy test\repository2\Team Folder\Marketing\Smarttech Marketing\Brochures\SIEM Brochure\2 page SIEM Brochure.docx	27.86 KB	docx	Marketing Document 0.544	Written content/Draft 0.669	[Not Classified]	Success 0	Test2	■	Non-sensitive	Low	<button>UPDATE</button> <button>CANCEL</button>
172.31.0.62	C:\DemoSet\100GB\part7\accuracy test\repository2\Team Folder\Marketing\Smarttech Marketing\Brochures\SIEM Brochure\2 page SIEM Brochure\Backup of 2 page SIEM Brochure.docx	202.34 KB	docx	Marketing Document 0.353	Written content/Draft 0.226	[Not Classified]	Success 0	Test2	■	Non-sensitive	Low	<button>UPDATE</button> <button>CANCEL</button>
172.31.0.62	C:\DemoSet\100GB\part7\accuracy test\repository2\Team Folder\Zero Day Con\Marketing and PR\Zero Day Con Marketing.pdf	571.93 KB	pdf	Marketing Document 0.412	Written content/Draft 0.199	[Not Classified]	Success 0	Test2	■	Non-sensitive	Low	<button>UPDATE</button> <button>CANCEL</button>
172.31.0.62	C:\DemoSet\100GB\part7\accuracy test\repository2\Team Folder\Marketing\Smarttech Marketing\Marketing Campaign Plans\Penetration Testing\Penetration testing email campaign2.docx	16.50 KB	docx	Marketing Document 0.360	Written content/Draft 0.324	[Not Classified]	Success 0	Test2	■	Non-sensitive	Low	<button>UPDATE</button> <button>CANCEL</button>
172.31.0.62	C:\DemoSet\100GB\part7\accuracy test\repository2\Team Folder\Marketing\Smarttech Marketing\Brochures\PenTesting Brochure\Penetration Testing 2 page .docx	258.38 KB	docx	Marketing Document 0.268	Written content/Draft 0.328	[Not Classified]	Success 0	Test2	■	Non-sensitive	Low	<button>UPDATE</button> <button>CANCEL</button>

This area in the Getvisibility Focus dashboard gives administrators the option to verify results from the machine learning models. There are options to change the category, subcategory, and the presence of PII within a document.

Getvisibility can update its machine learning model both Automatically and Manually . This can be set up by the administrator during installation.



Key Use Cases

Protecting IP Data Security

You cannot protect what you do not understand. Without an accurate means of understanding and classifying unstructured data, data security measures cannot work effectively.

Information Migration Enterprise Content Migration

Accelerate ECM migration through:

- Information on redundant, obsolete, trivial and duplicate data
- Phased automated migration using Getvisibility output
- Track crucial document migration -Identify and reduce shadow IT and personal stashes

GRC and ROT Data Governance and Compliance

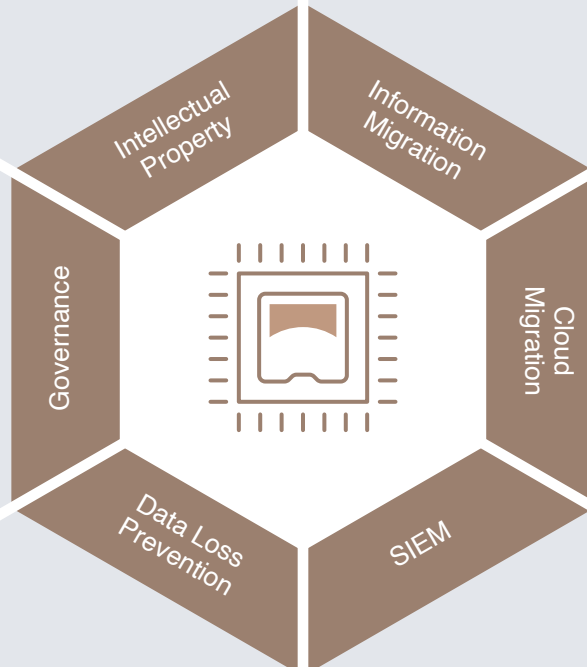
Gain a clear view of the customer's unstructured data compliance posture using the detailed reports and dashboards.

Roll Out DLP Data Loss Prevention

Getvisibility integrates with a Data Loss Prevention (DLP) Platform to suggest or write the correct tags to the documents automatically.

SIEM Integration Security Incident Integration

Getvisibility integrates with Security Incident Event Management (SIEM) Platforms to allow immediate remediation or incident response to unstructured data anomalies.





What makes Getvisibility Focus different?

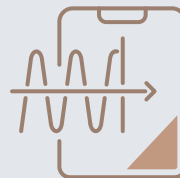
Legacy Data



Getvisibility Focus

Discovery and classification of unstructured legacy data and access to the Getvisibility Reporting Suite.

Organisational Overview



Getvisibility Data Risk Score

Multi-layered reporting analysing the current data risk posture of an organisation under multiple categories.

- 98%+ classification accuracy across 70 classification fields
- AI and ML models based on hundreds of millions of files from multiple companies and industries
- Continuous self-learning for increased personalization and accuracy.
- Classification suggestions are straightforward
- Enhanced data visibility reduces DLP false positives, data breaches and exfiltration
- Least privileged access to all data strengthens your zero trust security initiatives

Core Feature Breakdown

	Synergy	Enterprise suite Focus and Synergy
Email DLP on Classification	●	●
Live Classification of Data In Motion	●	●
Watermarking	●	●
Headers and Footers in Microsoft Office	●	●
Customer Support Via Email, Phone	●	●
Policy Configuration	●	●
Windows Explorer Classification	●	●
Sharepoint		●
Insider Threat Monitoring		●
Risk Assessments		●
On-Demand or Scheduled Scans		●
Data R.O.T Analysis		●
Comprehensive & User Friendly Visualisation of Classified Data Files		●
Reporting	●	●
Self Service Model Training		●
Data Risk Score Reporting		●